

EXCELLO LUXWOOD

HETEROGENOUS VINYL FLOORING



Medsom®

EXECELLO LUXWOOD

Execello series is a newly upgraded compact multilayered vinyl floor covering , with 2m width sheet and different thickness. The transparent wear layer with printed top layer providing endless design possibilities, lasting performance and low maintenance cost. It is the perfect combination of practicality and aesthetics, recommended for high traffic area in education, office, retail,hospital and other public spaces.

FEATURES

☑ Highly Durable

Compact vinyl floor covering is durable even under the strain of heavy foot traffic areas.

☑ Simple Maintenance

The vinyl sheet is coated with special surface treatment, making it even more resistant to scratches or stains and even easier to clean and maintain.

☑ Easy Installation

Non woven backing for ease of installation, no bubbles.

☑ 3D Glass Fiber Technology

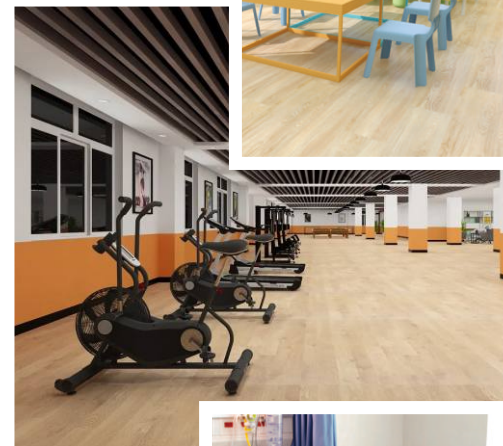
Compact backing with innovative fiber glass reinforced layer. High resistance to heavy duty and excellent dimensional stability.

☑ Customization Service

Digital printed technology enables you to design your own unique floor in the high quality of vinyl sheet.

☑ Health and Eco-friendly

100% virgin raw material. No DOP, no heavy-metal, no benzene, no formaldehyde , friendly to health and environment.

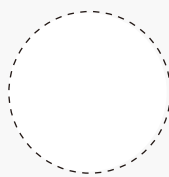


STRUCTURE

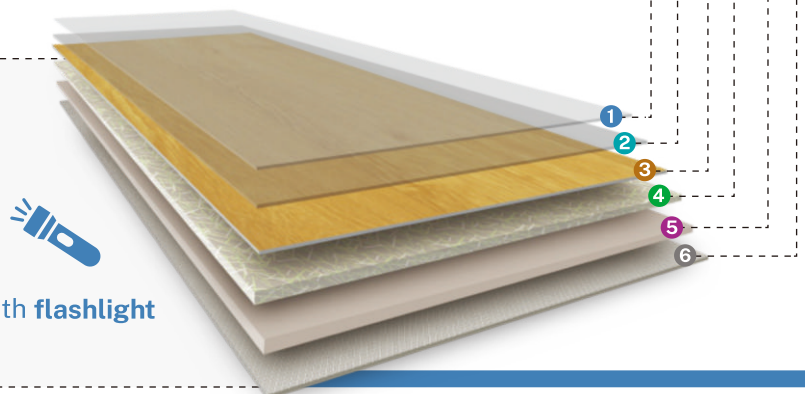
- 1 UV Coating
- 2 PVC Wear Layer
- 3 Printed Design
- 4 3D Fiber Glass Reinforced Layer
- 5 Compact Back Layer
- 6 Non-Woven Backing Layer



Non-Woven Backing



Checking here with **flashlight**





HP-E901



HP-E902



HP-E903



HP-E904



HP-E905



HP-E906



HP-E907



HP-E908



HP-E909



HP-E910



HP-E911



HP-E912



HP-E913



HP-E914



HP-E915



HP-E916



HP-E917



HP-E918



HP-E919



HP-E920



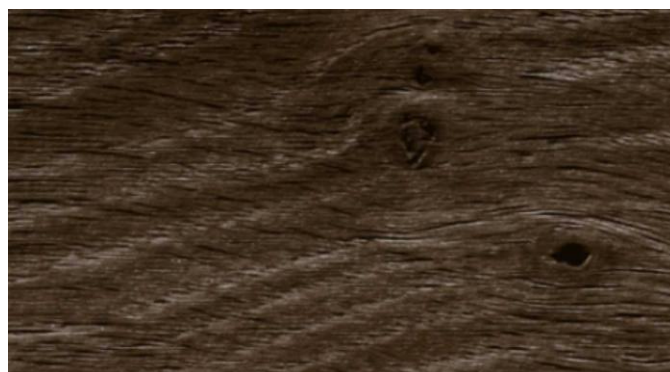
HP-E921



HP-E922



HP-E923



HP-E924



DESCRIPTION	STANDARD	SYMBOL	RESULT
Surface treatment			UV
Total thickness	EN 428		2.0mm
Wear layer thickness	EN 429		0.35mm
Weight	EN 430		3600g/m ²
Width of sheet	EN 426		2m
Length of sheet	EN 426		20m
Abrasion group	EN 660		T
Dimensional stability	EN 434		≤0.1%
Residual indentation	EN 433		≤0.1mm
Castor chair test	EN 425		OK
Colour fastness to light	ISO 105 - B02		≥6
Slip resistance	DIN 51130		R9
Impact sound resistance	EN ISO 717-2		19dB
Staining resistance	EN 423		OK
Reaction to fire	EN 13501-1		Class: Bfl-s1
Toxic testing	GB/T 18586-2001		Qualified
European Classification	EN 685	 	Class 34 Commercial very heavy Class 43 Industrial heavy

* Available thickness : 2.0/2.2/2.5/2.6/2.8/3.0mm



Flooring for Ship



Flooring for Bus



Flooring for Train



Phthalate Free



Recyclable



Health & Safety



Hedsom®